

THE LEGACY

CONTACTS:

(+233) 30 231 0983

(+233) 26 687 8632

info@boomerangconstruction.com

www.boomerangconstructionltd.com



Welcome to The Legacy a four bedroom home, where modern living meets timeless charm. Nestled in the heart of Accra, Adenta. Our latest development offers a unique opportunity to experience the epitome of contemporary living in a vibrant, family-friendly neighborhood.



AMENITIES

FOUR BEDROOM HOME.

THREE ENSUITE BEDROOMS.

GUEST WASHROOM.

STUDY ROOM.

WALK-IN CLOSET IN MASTER BEDROOM.

BUILT IN WARDROBES TO ALL ROOMS.

OPEN PLAN KITCHEN.

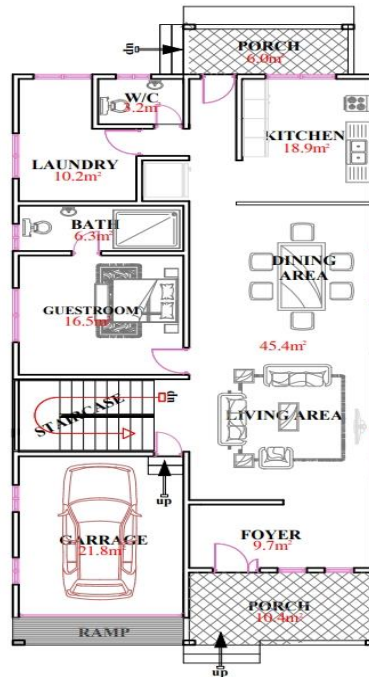
**DSTV & FIBER INTERNET, INTERNAL
LOCKUP GARAGE.**

**REMOTE OPERATED SECURITY
GATE.**

24-HOUR CCTV SURVEILLANCE.

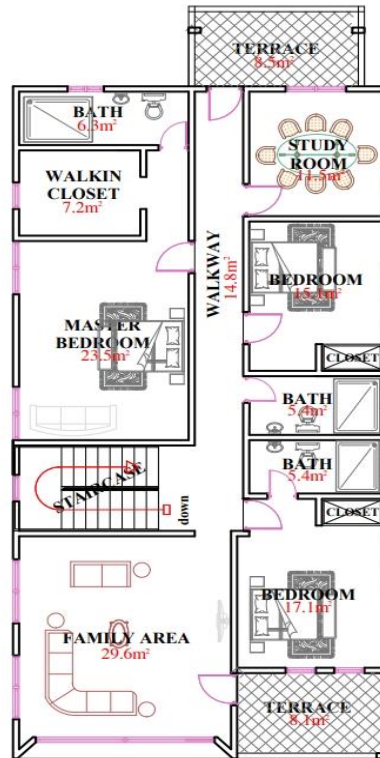
FLOORPLANS

GROUND FLOOR



GROUND FLOOR PLAN

FIRST FLOOR



UPPER FLOOR PLAN

LOCATION: ADENTA

Located in Adenta is a four bedroom home, a neighborhood with history and heart has become one of Accra's most established and sought-after neighborhoods in West Africa, Adenta is a lively, vibrant and hip community, pulsating with life 24/7. It is a one-stop-shop for convenience, comfort, safety and enjoyable living.

Ease of movement within Adenta.

Easy connectivity to Accra Mall, Kotoka Int. Airport, 37 Military Hospital and the Central Accra business center.

Schools:

Gracefield Montessori School – 11 min

Browns International School of Excellence – 12 MIN

KAF International School – 13 MIN

Hospitals:

Lampsi Medical Center – 12 MIN

Mother-Love Hospital – 7 MIN

SSNIT Hospital – 8 MIN

Social Amenities:

The Good Baker – 23 MIN

Food Garage – 23 MIN

Daddy Boba – 25 MIN

Accra Mall – 31 MIN

Legon Botanical Gardens – 26 MIN

Aburi Gardens – 36 MIN

Peduase – 28 MIN

**A Four Bedroom Home with Three Ensuite
bedrooms
(Incl. a walk-in closet
In the master bedroom).**

Study Room.

Family living room.

**Open Plan living
And Dining Area.**

Guest washroom.

Kitchen & Pantry.

Internal Lockup Garage.

STARTING AT

USD\$199,000

THE LEGACY



PAYMENT PLAN

Quarter 1	Quarter 2	Quarter 3	Quarter 4
40%	30%	20%	10%
AGREEMENT SIGNED.	THREE MONTHS AFTER AGREEMENT SIGNED.	SIX MONTHS AFTER AGREEMENT SIGNED.	HANDOVER OF PROPERTY.

Payment Plan

Our payment terms are flexible, we require a reservation fee of USD\$ 5,000 and the balance of the purchase price is paid according to the agreed payment plan.

Disclaimer

- The material contained in this brochure is provided for information only and neither the provision of such material nor its access by any person shall be deemed to give rise to any commitment or obligation on the part of Boomerang Constructions Limited or any of its subsidiaries or affiliates.
- The images and video and its content are the designer's impressions only and are subject to change as required by the Developer and by authority.

**Reservation fee is nonrefundable.*



About the developer

Boomerang is a curved flat piece of wood that can be thrown so that it returns to the thrower. Our development Company aims to create projects that generate value and return prosperity to communities. Inspired by the Ghanaian tradition of Sankofa, we respect the history and heritage of our locations, integrating them into modern designs that honor tradition while embracing progress. So, when you think of Boomerang Construction Ltd, think of a boomerang soaring through the air, guided by the wisdom of Sankofa, returning prosperity to the communities we serve and leaving a legacy of excellence for future generations.

BOOMERANG CONSTRUCTION LTD.

Find out more: <https://boomerangconstructionltd.com/contact-us/> for more information.

RESERVE A UNIT WITH US

CALL:

(+233) 30 231 0983

(+233) 26 687 8632

**info@boomerangconstruction.com
www.boomerangconstructionltd.com**

